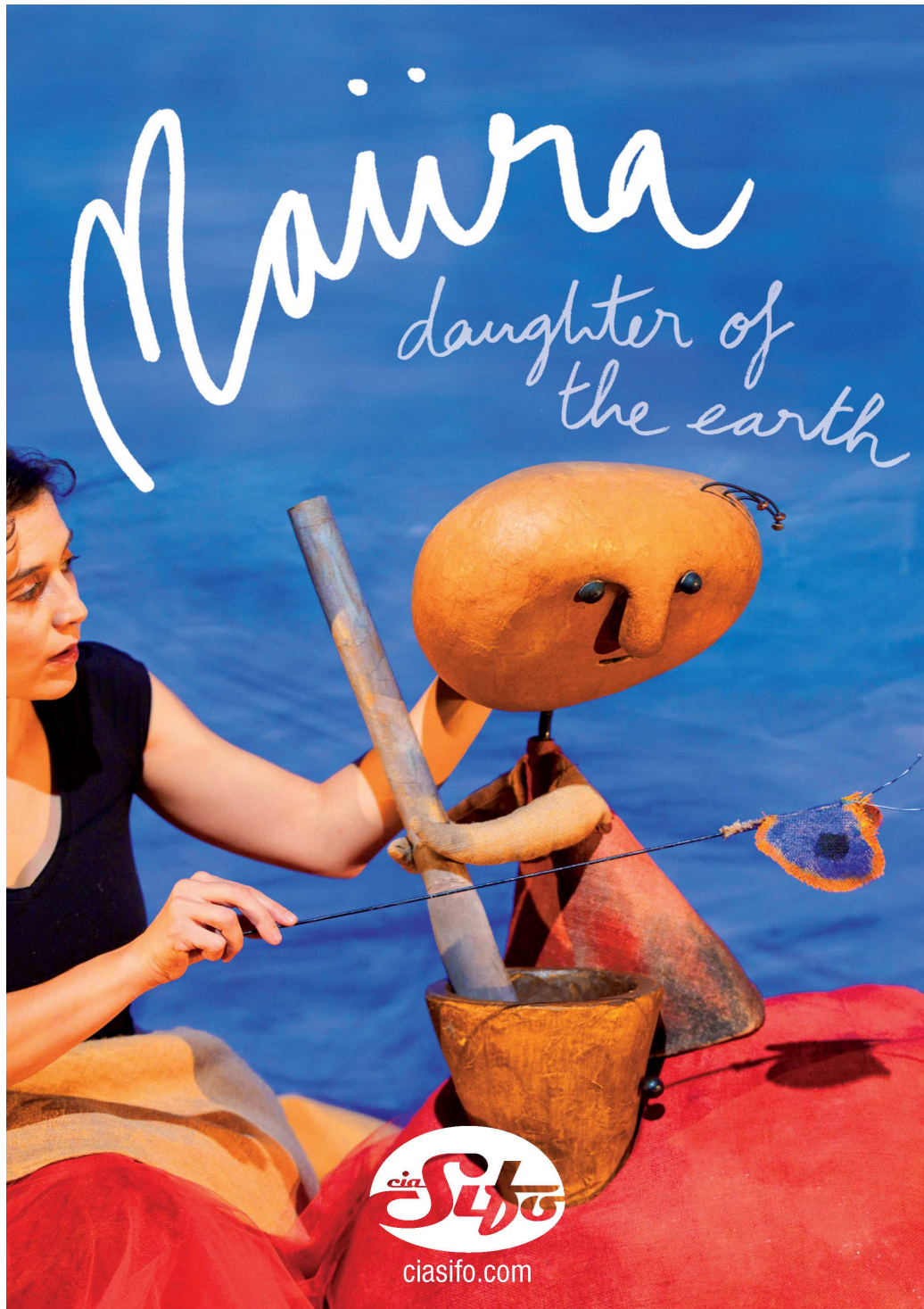


Maira  
\*  
filla  
def la  
terra

## DATASHEET





## **STAGE SPACE-DIMENSIONS**

WIDE: 5m / DEEP: 4m / HIGH: 3,5m

**TIME TO SET UP : 3H**

**SHOW LENGTH : 35min x 2 performances. Break : 30min**

**TIME TO TEAR DOWN : 30min**

## **EQUIPMENT**

- 2 electric pipes in the stage
- Prepared black space
- 1 electric pipe in front of the stage
- staire in the center of the stage to comunicate the stage and the audience

## **ILUMINACIÓN**

- 12 PC 1 Kw
- 2 Profiles 15-30 ETC JR 575wts with tripod and gobo
- 2 Asymmetrics 1kw
- 12 DIMMER CHANNELS OF 2,5KW DMX 512
- Lighting board with 12 submasters
- Cableado de corriente diverso

All devices must be in perfect condition, with its elements: palas, portafiltros.

## **SOUND**

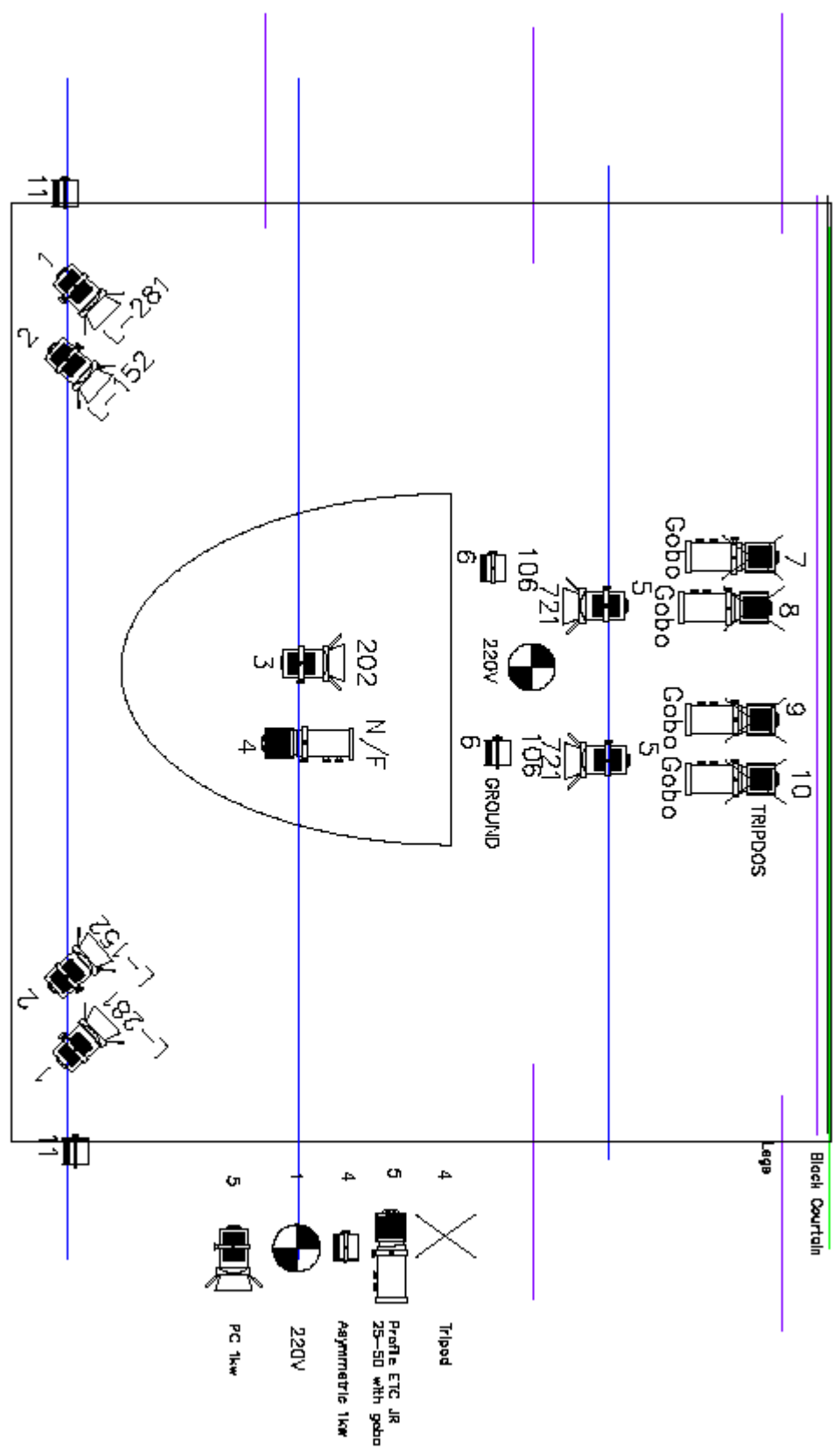
- 1 micro inalámbrico de diadema

## **THEATER TECHNICIAN**

- 1 Lighting/sound technician (for loading)

## **GREENROOM**

- Equiped greenroom with toilet, mirrors and heating
- Mineral water





## TECHNICAL CONTACT

Roc Laín: 672.158.924

Mail : [roc.larrys@gmail.com](mailto:roc.larrys@gmail.com)

Cia.Sifó :

[www.ciasifo.com](http://www.ciasifo.com)

<https://www.facebook.com/ciasifo>

[info@ciasifo.com](mailto:info@ciasifo.com)

